



Sub Hunt Revisited						
By Vosene						
Falcon Ver	Patch Status	Theatre of Operations				
BMS	4.32 Patch 7	Korea	X	Korea PvP		Korea Old Aircraft
Package Information						
Takeoff time	Callsign	Data ID	Task	Target	Package #	AC # & type
17:40:00	Claw1		HAVCAP	Chalis1	3748	2x F-15C
17:42:00	Chalis 1		AWACS	C3	3748	1 x E-3
17:43:00	Canteen1		Tanker	Stp 2	3774	1x KC-10
17:45:00	Camel1		Tanker	Stp 2	3774	1xKC-10
17:47:00	Hornet1		HAVCAP	Canteen1	3774	2x F/A-18E
17:49:00	Sting1		HAVCAP	Camel1	3774	2x F/A-18E
18:22:00	Snake1		DCA	Server flight	3803	1 x F-16C-52
18:23:00	Diamond1	4	Escort (AMVI)	Mako1	3707	4 x F-16C-52
18:25:00	Mako1	3	SEAD Escort (185 <sup>th</sup> )	Knight1	3707	4 x F-16C-52
18:27:00	Lightening1	2	Escort (185 <sup>th</sup> )	Tiger11 & 12	3707	4 x F-16C-52
18:29:00	Tiger11 & 12	51 & 52	SEAD Strike (401 <sup>st</sup> )	Radar guided SAM systems at target area	3707	2 x F-16C-40
18:30:00	Tiger 13 & 14	53 & 54	Close Escort (eHAF)	Knight1	3707	2 x F-16C-40
18:32:00	Knight1	1	Deep Strike (185 <sup>th</sup> )	Destroy warehouses	3707	4 x F-16C-52
(1) Blue colour indicates for human use. Red colour indicates for AI only.						
<b>Mission Success criteria</b>	Diamond1	No losses to SEAD Escort from A2A threats before they finish attacking SEAD targets				
	Mako1	No losses to Deep Strike due to radar guided SAM systems until they reach the target area				
	Lightening1	No losses to SEAD Strike from A2A threats before they finish attacking their target				
	Tiger11	Destroy AD threats to ensure no losses to Deep Strike from radar guided SAM systems at the target area				
	Tiger13	No losses to Deep Strike before they finish attacking their targets.				
	Knight1	Four target warehouses destroyed by 1920L.				
<b>Mission Partial Success criteria</b>	Diamond1	Maximum 1 loss to SEAD Escort from A2A threats before they finish attacking SEAD targets.				
	Mako1	Maximum 1 loss to Deep Strike due to radar guided SAM systems until they reach the target area.				
	Lightening1	Maximum 1 loss to SEAD Strike from A2A threats before they finish attacking their target				
	Tiger11	Destroy AD threats to ensure a maximum of 1 loss to Deep Strike from radar guided SAM systems at target area.				
	Tiger13	Maximum 1 loss to Deep Strike before they finish attacking their targets.				
	Knight1	Two target warehouses destroyed by 1920L.				

<b>Communications Frequencies</b>	<b>UHF</b>	<b>CH</b>	<b>VHF</b>	<b>CH</b>	<b>DL</b>
<b>AWACS/Package</b>	307.300	13			
<b>Tower (Suwon)</b>	353.100	15			
<b>Knight 1 (Tacan 11XY/74XY)</b>			138.050	1	1X
<b>Lightening1(Tacan 16XY/79XY)</b>			138.100	2	2X
<b>Mako 1 (Tacan 21XY/84XY)</b>			138.200	3	3X
<b>Diamond 1 (Tacan 26XY/89XY)</b>			126.200	4	4X
<b>Tiger11&amp;12 (Tacan 31XY/94XY)</b>			134.250	5	51 & 52
<b>Tiger13&amp;14 (Tacan 32XY/95XY)</b>			133.150	6	53 & 54
<b>Air to Air Weapon Loadout</b> (Free or Fixed)	<b>Free</b>				
<b>Air to Ground Weapon Loadout</b> (Free or Fixed)	<b>Free (no cluster munitions/JSOWs)</b>				
<b>Mission Flight plan</b> (Free or Fixed)	<b>Fixed</b>				

## BACKGROUND

The 185<sup>th</sup> VFS was formed on 03<sup>rd</sup> July 1999. For 15 years we have fought to keep the peace in Theatres including Korea, Israel, Panama and the Balkans. As our 15<sup>th</sup> anniversary approaches we once again find ourselves on the front line in Korea where tensions are running high.

Acts of aggression by the North Korean regime against South Korean vessels have continued to escalate since the sinking of the ROKS Cheonan on March 26, 2010. On 29 August 2013 a second South Korean naval vessel was sunk by a North Korean torpedo. A drone operating from the ship captured the moment of impact.



Most recently, on 3<sup>rd</sup> July 2014, a cargo ship was struck and sunk in international waters off the west coast of South Korea.

Instead of enjoying a well-earned 15<sup>th</sup> birthday party, the 185<sup>th</sup> has unfortunately been recalled from leave and placed on high alert for a retaliatory strike against North Korea supported by members of our Allied Sqns.

## CURRENT SITUATION

South Korean sea routes are vital for both supply and trade and action must be taken to check this North Korean aggression. After evaluating all options, Higher Command has sanctioned a surgical strike against the bases where the sub responsible for these attacks is currently in dock for resupply. Our intelligence sources tracked the sub back to the area of the dock but unfortunately were not able to confirm the exact base the submarine is in, we will therefore target them both.

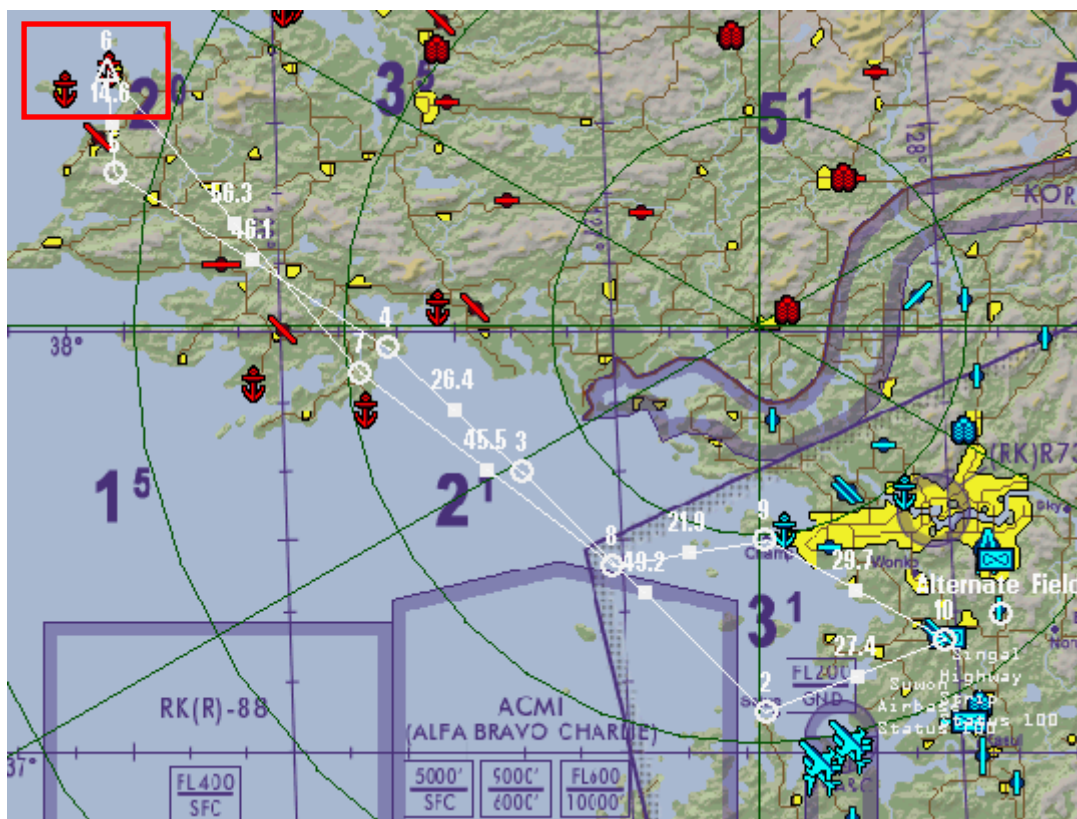
## MISSION OVERVIEW

**Mission** – At Pipa-got submarine base and Chodo-ri Naval Base there are a total of four submarine dock warehouses where the sub could be located. Your mission is to destroy all four of these facilities and with them, the sub.

This mission will involve a package of 20 aircraft, a 4-ship Strike, 2x 4-ship Escorts, a 4-ship SEAD, a 2-ship SEAD strike and a 2-ship Close Escort. Package details, including mission success, partial success and mission fail criteria are detailed in the table on Page 1 of this briefing.

Of interest, Pipa-got Submarine Base is the same facility destroyed by the 185<sup>th</sup> on 27 October 2001. The successful attack was led by Col Triton (Retired) as a preliminary mission for Operation Gallant Spear. You can find the original briefing [here](#). Unfortunately since that time, the dock has been rebuilt and is now much more heavily defended by both ground and air assets.

**Route** – Due to the large scale nature of the package, the route is fixed as follows:



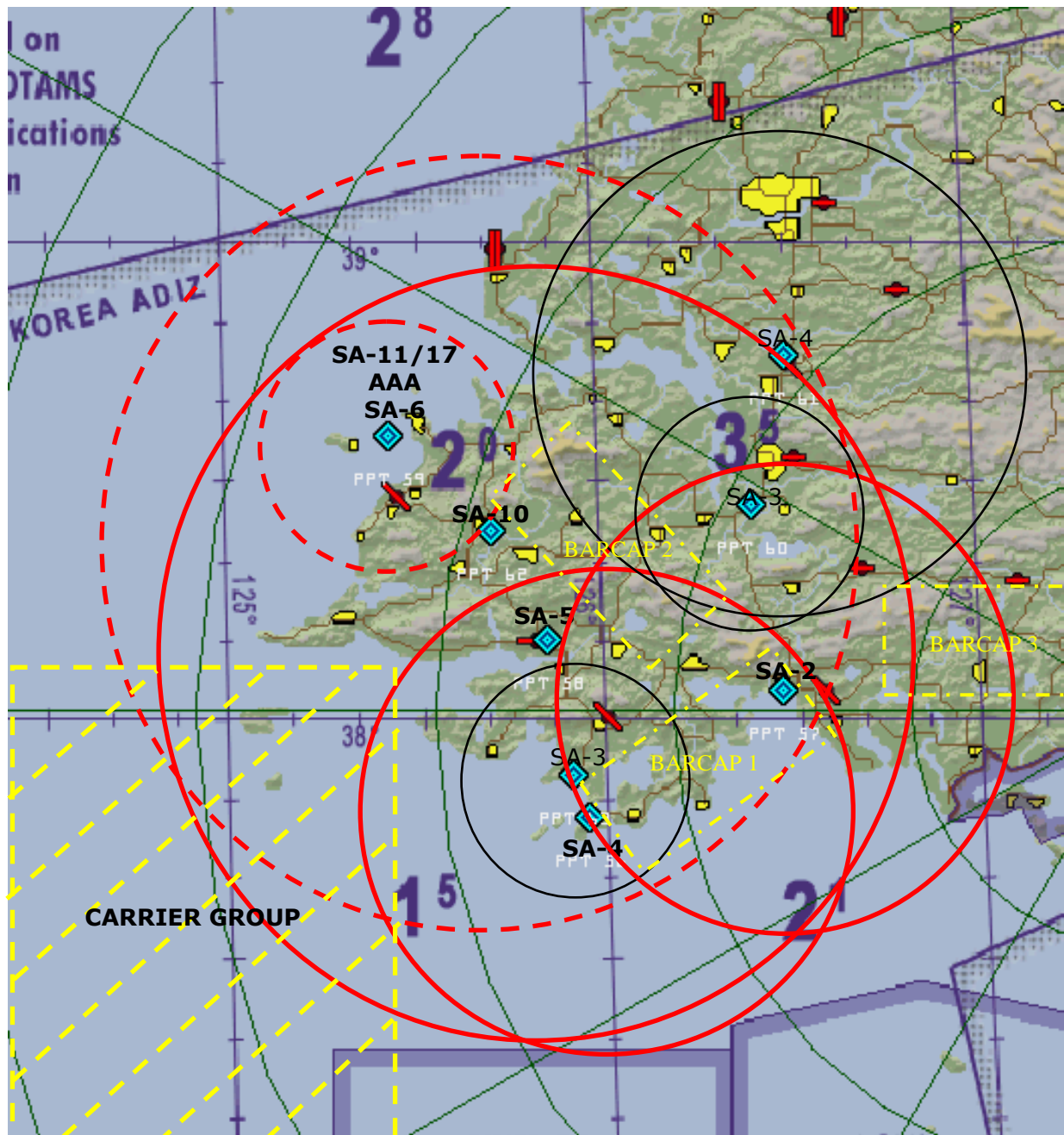
## ENEMY

North Korea has an extremely dense Air Defence system. Units in the area include SA-2, SA-3, SA-4, SA-5 and at least one SA-10. Defences in the vicinity of the target are believed to include several SA-11 or SA-17, together with AAA and possibly SA-6. There is also a carrier group out to the West that must be avoided at all costs.

There are two routine BARCAPs on the way to the target. Although the aircraft on CAP vary they are usually top of the line Mig-29S or Su-27. Once we enter North Korean airspace expect other assets to be scrambled in response. Enemy Sqns in the area include those flying Mig-21, Mig-23, Mig-29A, MiG-29S and Su-27. There are also Su-33 Naval Flankers from the carrier group to the West.

The map below shows the known positions of AD assets (solid lines) and estimated positions of other AD units (dotted lines). There may be additional defences we don't know about so be prepared for pop-up threats.





FRIENDLIES – Other than your package, there will no other friendly aircraft north of the FLOT. In support of the mission there are two tankers at Stp 2, primarily available for aircraft to top-up while waiting to cross the FLOT during Ingress. There is also AWACS support. All of these flights are supported by HAVCAPs. Details are on Page 1 of this briefing.

#### MISSION PLAN

We had planned to fly this mission entirely at night but our sources have indicated that the sub is due to leave the docks by 1920L this evening. If it slips away it could be months before we get another opportunity. We are therefore launching from 1823L.

We aim to catch the North Koreans by surprise. We have been running large scale air exercises for the last few days so they will not be suspicious of a large number of aircraft taking off from Suwon and proceeding west. Until we engage, you should not expect any additional enemy aircraft to be in the area.

Unfortunately the weather at Suwon for the departure will be poor (improving from 1845L) therefore the package should follow the in-use departure plate and re-join at Stp 2 (right hand orbit). Diamond1 and Mako1 should proceed on route as soon as they have joined up, with the rest of the package remaining at Stp 2 until Phase 1 is complete. There are 2x tankers at Stp 2 for flights to top up their tanks if required (report entering and exiting the hold on tactical).

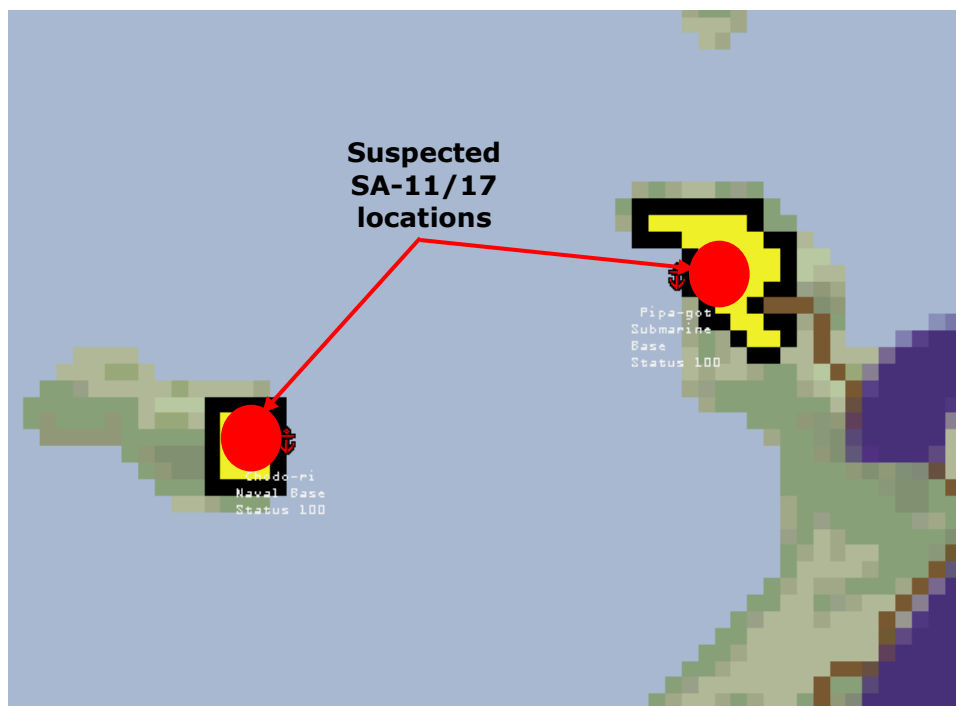
Altitude Blocks for holding at Stp 2 are as follows (we will avoid Angels 23-26 as this is the block the tankers will be using):

Flight	Hold Angels
Diamond1	A28-30
Mako1	A26-28
Lightening1	A21-23
Tiger11	A19-21
Tiger13	A17-19
Knight1	A15-17

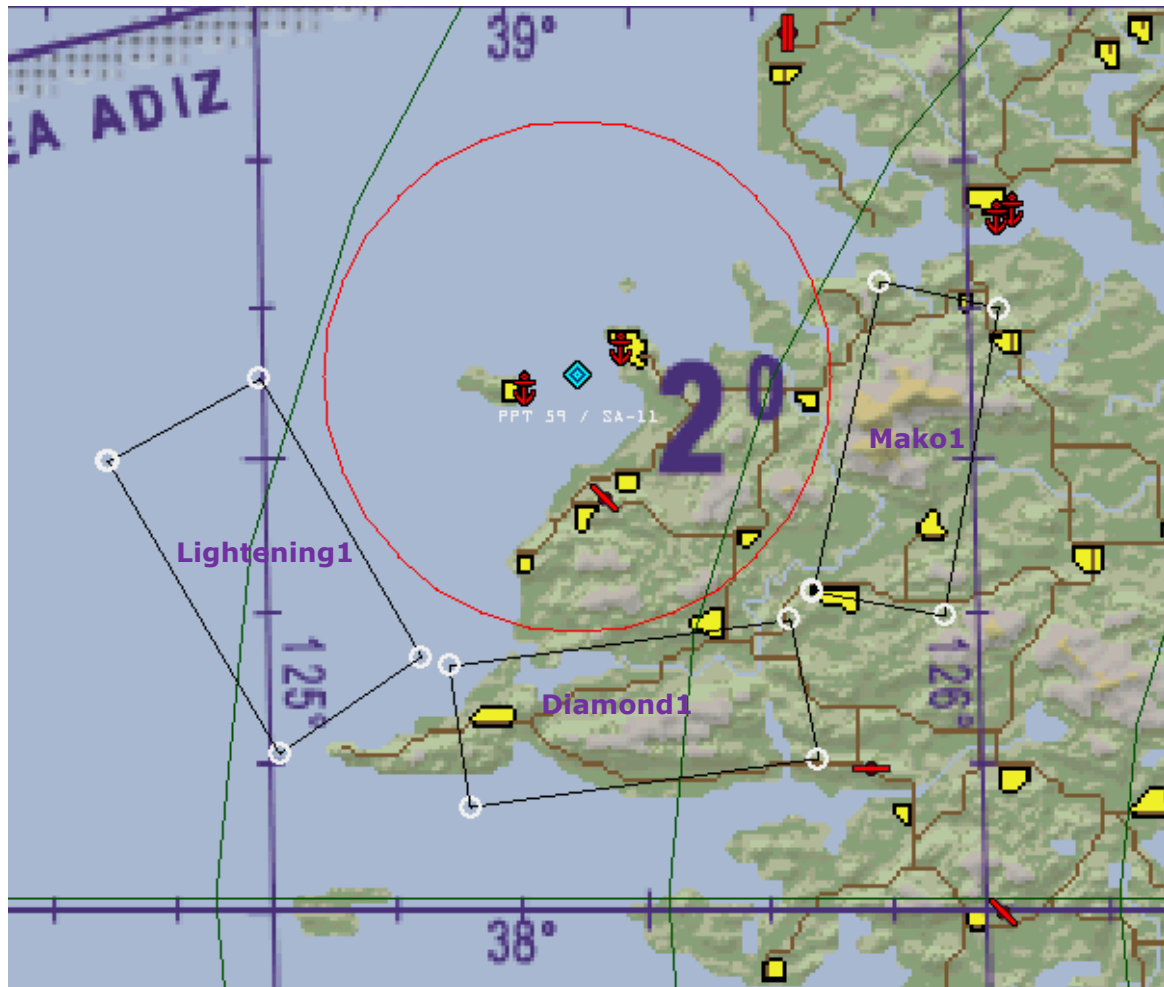
Phase 1 – First Engagement. In order to punch a hole in the enemy Air Defence network, Mako1 will need to destroy the SA-4 (PPT 56) and SA-2 (PPT 57) radars while Dimaond1 destroys BARCAP 1.

Phase 2 – Clearing the Way. On completion of Phase 1, the SA-5 (PPT 58) and SA-10 (PPT 62) fire control radars will need to be destroyed by Mako1 while Diamond1 (supported by Lightening1 as required) will destroy BARCAP 2 and any other fighters scrambling to intercept. Although not a primary objective, if time allows, Mako1 should engage any further radar SAMs as requested by Escorts in order to clear areas for A2A engagements.

Phase 3 – Clearing the Target. **PHASE 3 SHOULD BE COMPLETED BY 1910L.** There is a 20nm AD exclusion zone around the target area marked by PPT59. Only Mako1 should enter this due to high threat AD SAM systems operating around the target. Diamond1, Lightening1 and Mako1 will set up a TARCAP outside the exclusion zone while Tiger11 engages any SAM and AAA systems at the target site. In particular the SA-11/17 systems thought to be operating in the area must be destroyed. Mako1 should assist with any remaining SEAD ordnance it has available.



The following map shows the assigned TARCAP areas:



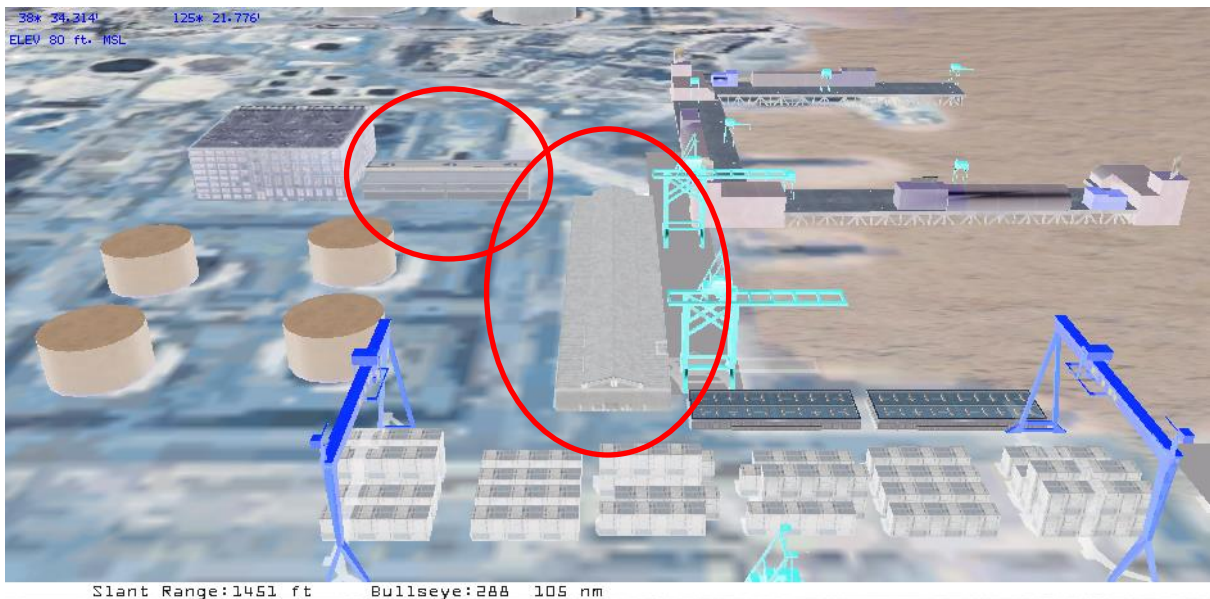
Phase 4 – Destroying the Target. **PHASE 4 MUST BE COMPLETED BY 1920L.** Knight1 will destroy the 4 target warehouses with Tiger 13 & 14 providing Close Escort to the Strike for the duration of the mission. Ligthening1, Diamond1 and Mako1 will maintain the BARCAP during this period.

The following recon photo (orientation North) shows the two warehouse targets to be destroyed at Pipa-got Submarine base:





The following recon photo (orientation North) shows the two warehouse targets to be destroyed at Chodo-ri Naval Base:



**Phase 5 – Egress and Landing.** It is likely the package will have to engage scrambled fighters during the egress. Landing will be on the active runway at Suwon and weather should be good enough for an overhead/battle-break as per Sqn SOPs.

#### Code Words

Phase	Code Word for Phase Complete
Phase 1 – First Engagement	OPEN SESAME
Phase 2 – Clearing the Way	ANVIL
Phase 3 – Clearing the Target	GERONIMO
Phase 4 – Destroying the Target	Knight1 RTB (In clear)

**Weather** -061800L 30025G35KT 3000 THRA OVC050TO070 BECMG 1845L 30015 8000+ SCT030TO230 BECMG 1920L 30010 10000 FEW200

From 06 Jul 1800L, wind 300 degrees 25kts gusting 35kts. 3km visibility, thunder & rain, cloud overcast from 5000 to 7000ft.

From 06 Jul 1845L, wind 300 degrees 15kts. 8km+ visibility, scattered cloud from 3000 to 23000ft.

From 06 Jul 1920L, wind 300 degrees 10kts. 10km+ visibility, few clouds at 20000ft.

**ROE** – We must be very careful not to further escalate the political situation. This strike is purely designed to demonstrate to the North Korean regime that we have the capability to destroy assets that target our forces no matter what or where they are. To that end, non-offensive aircraft (such as transports, AWACS, tankers etc.) must not be engaged.

**Ordnance** – This is a surgical strike and it is imperative that we avoid collateral damage, therefore no cluster munitions or JSOWs are permitted for this mission. All other weapons are free.

Good Luck